

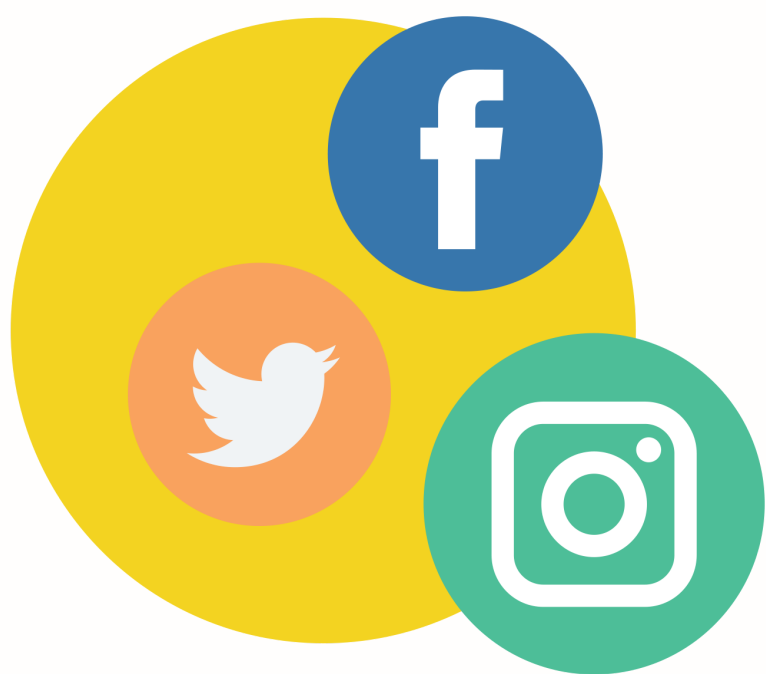


Quiz Time!



Are you ready to start your own enterprise?

Find the right answer(s) to these questions and share your creations on social media, using our hashtag **#diothercity**





A sustainable enterprise could help you (tick all that apply):

- A** Create a positive image for your brand.
- B** Earn more money.
- C** Attract a growing market for sustainable goods and services.
- D** Attract capital and mitigate risks.
- E** Manage your team better.



Starting a sustainability strategy:

A

Is fairly easy to do. Just start with your idea and it comes naturally!

B

Requires a lot of research. You need to identify the benefits of a sustainable business plan and then work towards achieving those objectives.



An inclusive city tour is a city tour that (tick all that apply):



Looks at the peripheral region and focuses on the local populations.



Includes all the main attractions of a touristy place.



Is affordable.



Takes into consideration special needs and disabilities.



Adapts to new technologies and digitalization.



Inclusive marketing aims to help you (tick all that apply):

- A** Get to know your clients better.
- B** Build a diverse team.
- C** Increase your profit by selling more products.
- D** Promote inclusion for everyone.
- E** Limit your market.



When developing your team:

A

You should recruit a lot of people to make sure your team acquires the needed skills right from the start!

B

You should start small, set your vision and goals clearly and then recruit your team as you progress.



**The most useful tip for
becoming a creative thinker is:**

A To Take risks!

B To change your attitude and start looking at every challenge from a new point of view.



Thank you!



**You have successfully completed
Module 5**

**Don't forget to share
your answers on social
media, using our
hashtag #diothercity**

